

Professional & Reliable



WE MANUFACTURE
FOLDER GLUER MACHINE
PROFESSIONAL AND RELIABLE

专业制造糊盒机

www.wzhoson.com



WENZHOU HOSON PRINTING MACHINERY CO., LTD

Add: No. 2, Nanwei Road 2, Economic Zone, Ouhai, Wenzhou, Zhejiang

Tel: +86-577-86157555

Fax: +86-577-86721996

After Sale: 86-577-86362955

WEB: <http://www.wzhoson.com>

E-mail: hoson@wzhoson.com hongye@wzhongye.com



全球销售网络 GLOBAL NET



专业制造，值得信赖！
We are professional! We are reliable!

企业简介 Enterprise Profile

温州市鸿盛印刷机械有限公司（原温州梧田鸿业印刷机械厂）创立于 90 年代，是温州首家专业制造糊盒机的厂商。

公司秉承“顾客至上、诚信经营、开拓创新”的经营理念，致力于满足客户快速、方便、经济的糊盒需求；为达到精度要求，公司采购了多台大型数控加工中心，力求精、准，加工零部件，制造出功能更齐全的新一代糊盒机。经过多年发展，我们建立了集生产、销售、售后为一体的成熟营销模式，与各代理商保持良好的合作关系，使公司成为化妆品、烟、酒、食品、药品等包装厂商的首选。我们的产品远销东南亚、中东、欧美等地区，出口量年年攀升。

公司主要产品有：4/6 角型糊盒机、勾底型糊盒机、预折型糊盒机、二折型糊盒机等。产品集光、电、气于一体，技术独特、操作简单、调试快速、自动化程度高，满足更多需求。高速糊盒系列、卡纸糊盒系列、瓦楞卡纸两用糊盒系列等，赢得了广大客户的青睐！

“客户的需求，就是我们的追求！”鸿盛竭诚欢迎中外客商、新老客户光临指导、洽商贸易。

We Wenzhou Hoson Printing Machinery Co., Ltd (Hongye Factory) started in 1990s, who is the earliest manufacturer of folder and gluer machine in Wenzhou, China.

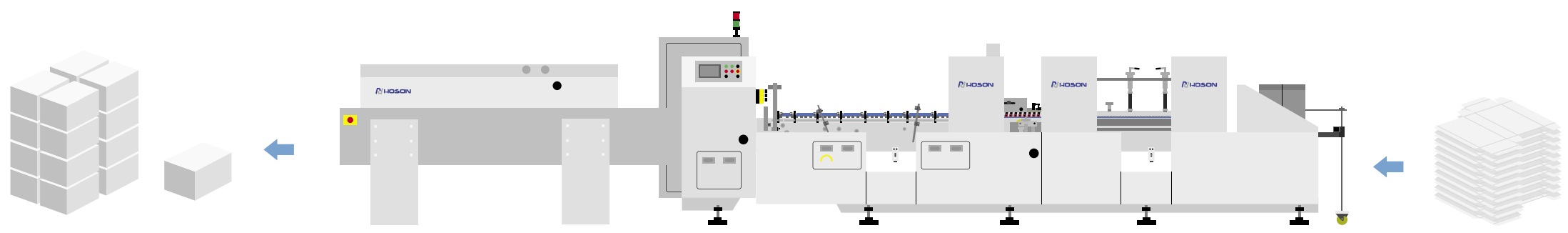
We belief in "Great Service, Creditable Management and Creation", and devote ourselves to find an easy-quick-economic way on folding and gluing. We promote a new generation of functional folder gluer with precision accessories made by machining center. We built a good relationship with agents. Through efforts, a mode integrated with production-sale-service has been built and completed. Nowadays, most of the box manufacturers in printing & packaging line choose us as their first option. The global sales net is extending, including South-East Asia, Middle East, EU, South America, etc.

Our main type of folder gluers are 4/6 corner type, crash-lock bottom type, pre-folding type and two-fold type, etc. The products are integrated by light, electric and air. We have these advantages: special design, easy operation, quick adjustment and high automation. To meet further demands, we recommend you the welcomed new arrivals: high speed series and corrugated-cardboard box series.

Customer demand is what we are pursuing!
We sincerely welcome your coming!



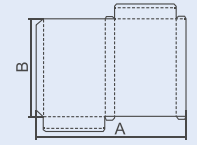
CE ISO9001:2015



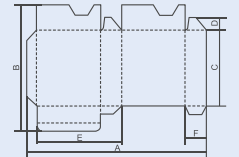
ZH-1800BFT-H

Automatic Crash Lock Bottom Type
Folder Gluer Machine

全自动高配勾底型糊盒机



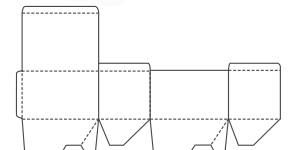
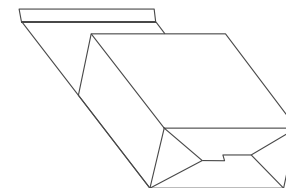
Straight Line Box
单边盒



Crash-lock Bottom Box
勾底盒

- 本机采用加强型传动机构，运行稳定，维护简单。
- 本机马达采用变频器，无极变速，稳定节能。
- 操作采用气压调节，电动（自动）调板，以快捷、准确的调节完成不同规格纸盒的生产需求。
- 给纸部采用电机单独控制，出纸以多条加厚皮带配合振动马达，并装有吸风装置，保证连续，准确，自动给纸。
- 采用高速磨边电机，左右配置，使上胶稳定、粘口牢固、不脱胶。
- 配备上、下糊筒，各两组；左右采用牙杆调节，操作简便。
- 采用人机界面和PLC操作系统、远程诊断维护系统（已配遥控控制系统），配备光电控制压紧部系统，进纸部加减速后压紧部自动加减速。可累加计数定量、分段计数，装有自动踢纸，功能更齐全。
- 输送带配备海绵压紧带，并配备气压功能，上部压紧宽皮带可单独来回移动，确保产品完尚无缺，横向收纸台，无极变速，收盒快捷。
- 预折部第一折为180°，第三折为135°；（本折部）第二折及第四折为180°成型，特殊型式可另行设计。纠偏部主要针对瓦楞糊盒，如E/B瓦，具有校正走纸之功能。
- 本机主机高速折叠成型片基带采用国外进口。
- 另可选配喷胶系统，以及等离子表面处理系统等。

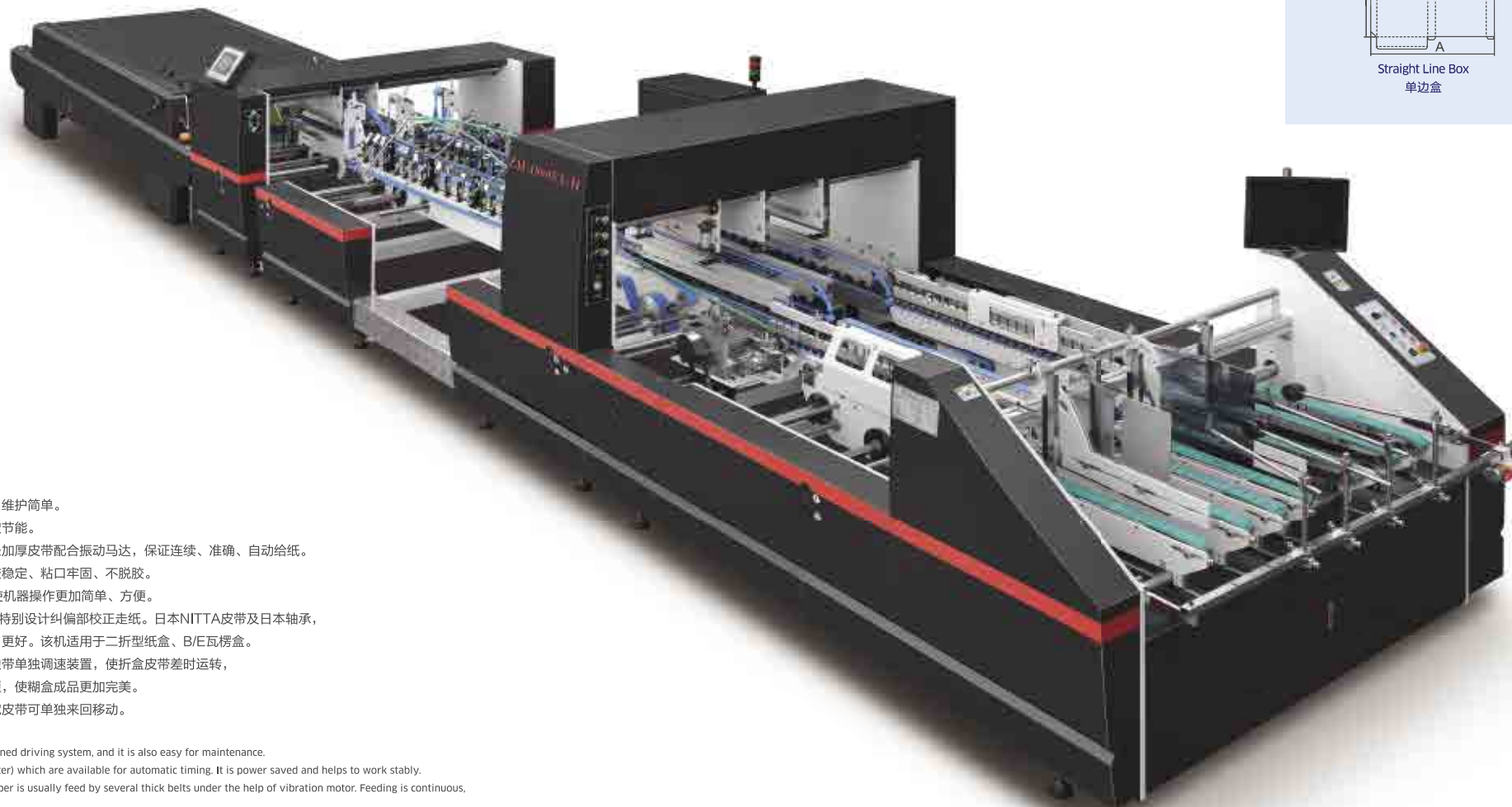
- The machine is running steady with strengthened driving system, and it is also easy for maintenance.
- The motor is controlled by transducers (inverter) which are available for automatic timing. It is power saved and helps to work stably.
- An electric adjusting system in the machine makes it more conveniently when adjusting the space of carriers which usually based on the double-face tooth rods adjusting system.
- Feeder is controlled by a separated motor. Paper is usually feed by several thick belts under the help of vibration motor and induced draft motor. Feeding is continuous, exact and automatic with this system.
- Grinders are provided in both sides of machine, to make gluing more stable and firm.
- Two sets of gluing units: top unit for bottom glue and lower unit for side glue. All standard glue units apply line glue. Space adjustment is through the tooth rods.
- PLC system and touch screen for easy operation. Out-put quantity/speed/counting etc., is able to set by this system. A remote diagnosis helps to maintenance (remote controller system included), and a photoelectric system for speed control in pressing unit (speed in pressing unit is corresponding automatically with the one in feeding unit). Counting through photo-electric sensor & electromagnet kicking.
- Pressing unit with pneumatic design. And the upper belt is able to work separately. Pressing also by a sponge belt in this section to keep out-put in a perfect condition. A transverse paper collection table after the pressing unit helps to collect boxes quickly.
- In the pre-folding part, the first fold at 180°, the third fold at 135°. The second fold and the fourth fold box at 180°. The correction section helps paper running and folding in the right line.
- Spraying system and plasma device are for options. And the special design is available.



ZH-1800FT-H

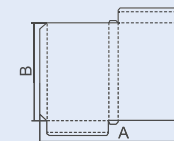
Automatic Two-Fold Type
Folder Gluer Machine

全自动二折型糊盒机



- 本机采用加强型传动机构，运行稳定，维护简单。
- 本机马达采用变频器，无极变速，稳定节能。
- 给纸部采用电机单独控制，出纸以多条加厚皮带配合振动马达，保证连续、准确、自动给纸。
- 采用高速磨边电机，左右配置，使上胶稳定、粘口牢固、不脱胶。
- 本机配备PLC触摸屏人机界面控制，使机器操作更加简单、方便。
- 本机专为糊、折E/B型瓦楞纸盒设计，特别设计纠偏部校正走纸。日本NITTA皮带及日本轴承，机器运行更加稳定，使折盒效果更准、更好。该机适用于二折型纸盒、B/E瓦楞盒。
- 针对瓦楞盒，机器配有两侧折盒成型边带单独调速装置，使折盒皮带差时运转，达到纠正纸盒斜角，大小边不对称问题，使糊盒成品更加完美。
- 机器压紧部配备气压功能，上部压紧宽皮带可单独来回移动。

- The machine is running steady with strengthened driving system, and it is also easy for maintenance.
- The motor is controlled by transducers (inverter) which are available for automatic timing. It is power saved and helps to work stably.
- Feeder is controlled by a separated motor. Paper is usually fed by several thick belts under the help of vibration motor. Feeding is continuous, exact and automatic with this system.
- Grinders are provided in both sides of machine, to make gluing more stable and firm.
- PLC system and touch screen for easy operation. Out-put quantity/speed/counting etc., is able to set by this system.
- This model is in special design with a correction unit for the corrugated box(E/B flute). We equip good spare parts on machine.
- To make the un-symmetric folding corrected, an option of separate governor which can control speed in each side solely is offered to the corrugated board products in folding section.
- Pressing unit with pneumatic design. And the upper belt is able to work separately.



Straight Line Box
单边盒

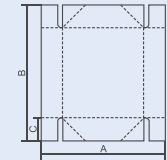


ZH-1600BFST

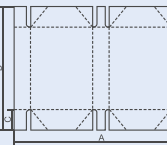
Automatic 4/6 Corner Type
Folder Gluer Machine
全自动4/6角型糊盒机



- 本机采用加强型传动机构，运行稳定，维护简单。
 - 本机马达采用变频器，无极变速，稳定节能。
 - 操作采用电动（自动）调板，以准确、快捷的完成更换不同规格纸盒的生产需求。
 - 给纸部采用伺服电机控制进纸，带吸风，出纸以多条加厚皮带配合振动马达，保证连续、准确、自动给纸。
 - 采用高速磨边电机左右配置，使上胶稳定、粘口牢固、不脱胶。
 - 配备上、下糊筒，各两组；左右采用牙杆调节，操作简便。
 - 采用人机界面和PLC操作系统、远程诊断系统（选配遥控控制系统），配备光电控制压紧部系统，进纸部加减速后压紧部自动加减速。可累加计数定量、分段计数，装有自动踢纸，功能更齐全。
 - 输送部配备海绵压紧带，并配备气压功能，上部压紧宽皮带可单独来回移动，确保产品完尚无缺，横向收纸台，无极变速，收盒快捷。
 - 预折部第一折为180°，第三折为135°；（本折部）第二折及第四折为180°成型，特殊型式可另行设计。
 - 纠偏部主要针对瓦楞糊盒，如E/B瓦，具有校正走纸之功能。
 - 本机配备进口喷枪（三枪三光电），进口伺服电机。
 - 本机主机高速折叠成型片基带采用国外进口。
-
- The machine is running steady with strengthened driving system, and it is also easy for maintenance.
 - The motor is controlled by transducers (inverter) which are available for automatic timing. It is power saved and helps to work stably.
 - An electric adjusting system in the machine makes it more conveniently when adjusting the space of carriers which usually based on the double-face tooth rods adjusting system.
 - Feeder is control by servo motor with suction. Paper is usually feed by several thick belts under the help of vibration motor. Feeding is continuous, exact and automatic with this system.
 - Grinders are provided in both sides of machine, to make gluing more stable and firm.
 - Two sets of gluing units: top unit for bottom glue and lower unit for side glue. All standard glue units apply line glue. Space adjustment is through the tooth rods.
 - PLC system and touch screen for easy operation. Out-put quantity/speed/counting etc., the customer can choose this configuration. A remote diagnosis helps to maintenance (remote controller system included), and a photoelectric system for speed control in pressing unit (speed in pressing unit is corresponding automatically with the one in feeding unit). Counting through photo-electric sensor & electromagnet kicking.
 - Pressing unit with pneumatic design. And the upper belt is able to work separately. Pressing also by a sponge belt in this section to keep out-put in a perfect condition. A transverse paper collection table after the pressing unit helps to collect boxes quickly.
 - In the pre-folding part, the first fold at 180°, the third fold at 135°. The second fold and the fourth fold box at 180°. The correction section helps paper running and folding in the right line.
 - Special parts for this type: three-gun cold glue spray system from hhs, Baumer (hot-melt for option), Servo system from Yaskawa.
 - Belts in the main part of the machine are imported.



4 Corner Collapsible Box
4角盒



6 Corner Collapsible Box
6角盒



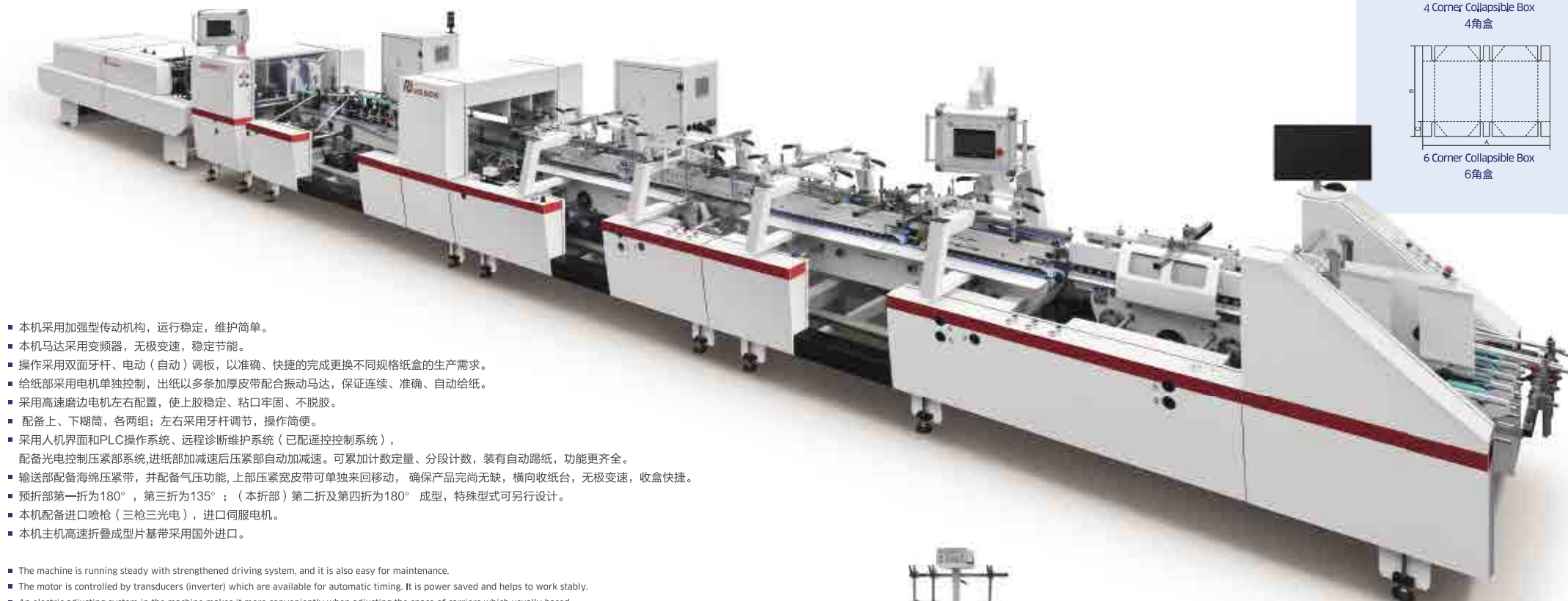
三枪
Three Nozzles



ZH-880BFST

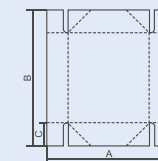
Automatic 4/6 Corner Type
Folder Gluer Machine

全自动4/6角型糊盒机

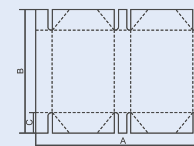


- 本机采用加强型传动机构，运行稳定，维护简单。
- 本机马达采用变频器，无极变速，稳定节能。
- 操作采用双面牙杆、电动（自动）调板，以准确、快捷的完成更换不同规格纸盒的生产需求。
- 给纸部采用电机单独控制，出纸以多条加厚皮带配合振动马达，保证连续、准确、自动给纸。
- 采用高速磨边电机左右配置，使上胶稳定、粘口牢固、不脱胶。
- 配备上、下糊筒，各两组；左右采用牙杆调节，操作简便。
- 采用人机界面和PLC操作系统、远程诊断维护系统（已配遥控控制系统），配备光电控制压紧部系统，进纸部加减速后压紧部自动加减速。可累加计数定量、分段计数，装有自动踢纸，功能更齐全。
- 输送部配备海绵压紧带，并配备气压功能，上部压紧宽皮带可单独来回移动，确保产品完尚无缺，横向收纸台，无极变速，收盒快捷。
- 预折部第一折为180°，第三折为135°；（本折部）第二折及第四折为180°成型，特殊型式可另行设计。
- 本机配备进口喷枪（三枪三光电），进口伺服电机。
- 本机主机高速折叠成型片基带采用国外进口。

- The machine is running steady with strengthened driving system, and it is also easy for maintenance.
- The motor is controlled by transducers (inverter) which are available for automatic timing. It is power saved and helps to work stably.
- An electric adjusting system in the machine makes it more conveniently when adjusting the space of carriers which usually based on the double-face tooth rods adjusting system.
- Feeder is controlled by a separated motor. Paper is usually feed by several thick belts under the help of vibration motor. Feeding is continuous, exact and automatic with this system.
- Grinders are provided in both sides of machine, to make gluing more stable and firm.
- Two sets of gluing units: top unit for bottom glue and lower unit for side glue. All standard glue units apply line glue. Space adjustment is through the tooth rods.
- PLC system and touch screen for easy operation. Out-put quantity/speed/counting etc., is able to set by this system. A remote diagnosis helps to maintenance (remote controller system included), and a photoelectric system for speed control in pressing unit (speed in pressing unit is corresponding automatically with the one in feeding unit). Counting through photo-electric sensor & electromagnet kicking.
- Pressing unit with pneumatic design. And the upper belt is able to work separately. Pressing also by a sponge belt in this section to keep out-put in a perfect condition. A transverse paper collection table after the pressing unit helps to collect boxes quickly.
- In the pre-folding part, the first fold at 180°, the third fold at 135°. The second fold and the fourth fold box at 180°. The correction section helps paper running and folding in the right line.
- Special parts for this type: three-gun cold glue spray system from hhs, Baumer (hot-melt for option), Servo system from Yaskawa.
- Belts in the main part of the machine are imported.



4 Corner Collapsible Box
4角盒



6 Corner Collapsible Box
6角盒



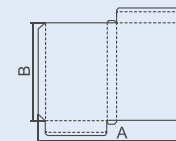
三枪
Three Nozzles



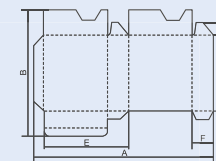
ZH-1400BFT-H UPGRADE

Automatic Crash Lock Bottom Type
Folder Gluer Machine

全自动高配勾底型糊盒机



Straight Line Box
单边盒



Crash-lock Bottom Box
勾底盒



- 本机采用加强型传动机构，运行稳定，维护简单。
- 本机马达采用变频器，无极变速，稳定节能。
- 操作采用双面牙杆、电动（自动）调板，以准确、快捷的完成更换不同规格纸盒的生产需求。
- 给纸部采用电机单独控制，出纸以多条加厚皮带配合振动马达，保证连续、准确、自动给纸。
- 采用高速磨边电机，左右配置，使上胶稳定、粘口牢固、不脱胶。
- 配备上、下糊筒，各两组；左右采用牙杆调节，操作简便。
- 采用人机界面和PLC操作系统、远程诊断维护系统（另选配遥控控制系统），配备光电控制压紧部系统，进纸部加减速后压紧部自动加减速。可累加计数定量、分段计数，装有自动踢纸，功能更齐全。
- 输送部配备海绵压紧带，并配备气压功能，上部压紧宽皮带可单独来回移动，确保产品完尚无缺，横向收纸台，无极变速，收盒快捷。
- 预折部第一折为180°，第三折为135°；（本折部）第二折及第四折为180°成型，特殊型式可另行设计。
- 纠偏部主要针对瓦楞糊盒，如E/B瓦，具有校正走纸之功能。
- 针对瓦楞盒，机器配有两侧折盒成型边带单独调速装置，使折盒皮带差时运转，达到纠正纸盒斜角，大小边不对称问题，使糊盒成品更加完美。
- 除普通卡纸盒外，还可糊、折E型、B型瓦楞。

- The machine is running steady with strengthened driving system, and it is also easy for maintenance.
- The motor is controlled by transducers (inverter) which are available for automatic timing. It is power saved and helps to work stably.
- An electric adjusting system in the machine makes it more conveniently when adjusting the space of carriers which usually based on the double-face tooth rods adjusting system.
- Feeder is controlled by a separated motor. Paper is usually feed by several thick belts under the help of vibration motor. Feeding is continuous, exact and automatic with this system.
- Grinders are provided in both sides of machine, to make gluing more stable and firm.
- Two sets of gluing units: top unit for bottom glue and lower unit for side glue. All standard glue units apply line glue. Space adjustment is through the tooth rods.
- PLC system and touch screen for easy operation. Out-put quantity/speed/counting etc., is able to set by this system. A remote diagnosis helps to maintenance (remote controller system included), and a photoelectric system for speed control in pressing unit (speed in pressing unit is corresponding automatically with the one in feeding unit). Counting through photo-electric sensor & electromagnet kicking.
- Pressing unit with pneumatic design. And the upper belt is able to work separately. Pressing also by a sponge belt in this section to keep out-put in a perfect condition. A transverse paper collection table after the pressing unit helps to collect boxes quickly.
- In the pre-folding part, the first fold at 90°, the third fold at 90°. The second fold and the fourth fold box at 180°. The correction section helps paper running and folding in the right line.
- To make the un-symmetric folding corrected, an option of separate governor which can control speed in each side solely is offered to the corrugated board products in folding section.
- Except the normal cardboard boxes, E/B flute is also able to be done.



ZH-1400FT-H

Two-fold Type Folder Gluer Machine

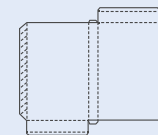
二折-高配型糊盒机



- 本机采用加强型传动机构，运行稳定，维护简单。
- 本机马达采用变频器，无极变速，稳定节能。
- 给纸部采用电机单独控制，出纸以多条加厚皮带配合振动马达，保证连续、准确、自动给纸。
- 采用高速磨边电机，左右配置，使上胶稳定、粘口牢固、不脱胶。
- 本机配备PLC触摸屏人机界面控制，使机器操作更加简单、方便。
- 本机专为糊、折E/B型瓦楞纸盒设计，施耐德电气/PLC，日本NITTA皮带及日本轴承，机器运行更加稳定，使折盒效果更准、更好。该机适用于二折型纸盒；后机压紧部采用气动调节。
- 针对瓦楞盒，机器配有两侧折盒成型边带单独调速装置，使折盒皮带差时运转，达到纠正纸盒斜角，大小边不对称问题，使糊盒成品更加完美。
- 输送部配备海绵压紧带，并配备气压功能，上部压紧宽皮带可单独来回移动，确保产品完尚无缺，横向收纸台，无极变速，收盒快捷。
- 另可设计做长形盒子，进纸最长可达1.2米。

- The machine is running steady with strengthened driving system, and it is also easy for maintenance.
- The motor is controlled by transducers (inverter) which are available for automatic timing. It is power saved and helps to work stably.
- Feeder is controlled by a separated motor. Paper is usually feed by several thick belts under the help of vibration motor. Feeding is continuous, exact and automatic with this system.
- Grinders are provided in both sides of machine, to make gluing more stable and firm.
- PLC system and touch screen for easy operation. Out-put quantity/speed/counting etc., is able to set by this system.
- This model is in special design with a correction unit for the corrugated box(E/B flute). We equip good spare parts on machine: Schneider Electric/PLC, Japanese Nitta Belts and Japanese Bearings.
- To make the un-symmetric folding corrected, an option of separate governor which can control speed in each side solely is offered to the corrugated board products in folding section.
- Pressing unit with pneumatic design. And the upper belt is able to work separately. Pressing also by a sponge belt in this section to keep out-put in a perfect condition. A transverse paper collection table after the pressing unit helps to collect boxes quickly.
- An option for paper feeding length of 1.2m is available after the special design.

Air Pressure
Adjustment
气压调节



Straight line box
单边贴盒



运行稳定
Stable operation



维护简单
Simple maintenance



节能省电
Energy saving



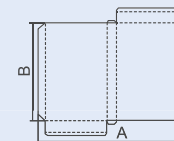
高速可靠
High speed and reliable



操作简便
Simple operation

ZH-1300FT

Two-fold Type Folder Gluer Machine
二折型糊盒机



Straight Line Box
单边盒



- 本机采用加强型传动机构，运行稳定，维护简单。
- 本机马达采用变频器，无极变速，稳定节能。
- 出纸采用多条加厚皮带配合振动马达，保证连续、准确、自动给纸。
- 采用高速磨边电机，左右配置，使上胶稳定、粘口牢固、不脱胶。
- 采用红外线光电控制，输送压紧部及自动计数功能，与进纸成型速度同时变速，出现空张自动减速停机，减少纸盒废品产生，节约成本。

- The machine is running steady with strengthened driving system, and it is also easy for maintenance.
- The motor is controlled by transducers (inverter) which are available for automatic timing. It is power saved and helps to work stably.
- Paper is feed by several thick belts under the help of vibration motor. Feeding is continuous, exact and automatic with this system.
- Grinders are provided in both sides of machine, to make gluing more stable and firm.
- An infrared photo-electric control system is in this machine. Pressing unit and counter will work synchronously with the feeding speed. Machine will slow down and stop running when no sheet there to reduce waste.



ZH-1200BFT

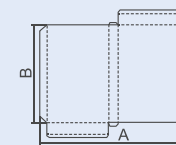
Automatic Crash Lock Bottom Type
Folder Gluer Machine

全自动标配勾底型糊盒机

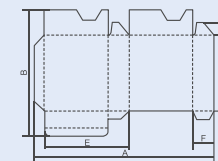


- 本机采用加强型传动机构，运行稳定，维护简单。
- 本机马达采用变频器，无极变速，稳定节能。
- 操作采用双面牙杆调节，上下联动，一次调整到位，精确快速。
- 给纸部采用电机单独控制，出纸以多条加厚皮带配合振动马达，保证连续、准确、自动给纸。
- 采用高速磨边电机，左右配置，使上胶稳定、粘口牢固、不脱胶。
- 配备上、下糊筒，各两组；左右采用牙杆调节，操作简便。
- 采用人机界面和PLC操作系统、远程诊断维护系统（另选配遥控控制系统），配备光电控制压紧部系统，进纸部加减速后压紧部自动加减速。可累加计数定量、分段计数，装有自动踢纸，功能更齐全。
- 输送部配备海绵压紧带，确保产品完好无缺，横向收纸台，无极变速，收盒快捷。
- 本机能生产两折、四折勾底盒，预折部第一折为180°，第三折为90°，第二折及第四折为180°成型，特殊型式可另行设计。

- The machine is running steady with strengthened driving system, and it is also easy for maintenance.
- The motor is controlled by transducers (inverter) which are available for automatic timing. It is power saved and helps to work stably.
- A double-face tooth rods adjusting system in the machine will help to move carriers and adjust the position when doing different box.
- Feeder is controlled by a separated motor. Paper is usually feed by several thick belts under the help of vibration motor. Feeding is continuous, exact and automatic with this system.
- Grinders are provided in both sides of machine, to make gluing more stable and firm.
- Two sets of gluing units: top unit for bottom glue and lower unit for side glue. All standard glue units apply line glue. Space adjustment is through the tooth rods.
- PLC system and touch screen for easy operation. Out-put quantity/speed/counting etc., is able to set by this system. A remote diagnosis helps to maintenance (remote controller system included), and a photoelectric system for speed control in pressing unit (speed in pressing unit is corresponding automatically with the one in feeding unit). Counting through photo-electric sensor & electromagnet kicking.
- Pressing unit with pneumatic design. And the upper belt is able to work separately. Pressing also by a sponge belt in this section to keep out-put in a perfect condition. A transverse paper collection table after the pressing unit helps to collect boxes quickly.
- The machine is able to make 2-fold or 4-fold crash-lock bottom boxes. In the pre-folding part, the first fold at 180°, the third fold at 90°. The second fold and the fourth fold box at 180°.



Straight Line Box
单边盒



Crash-lock Bottom Box
勾底盒

ZH-1000BFT-H Upgraded

Automatic Crash Lock Bottom Type

Folder Gluer Machine

全自动高配勾底型糊盒机

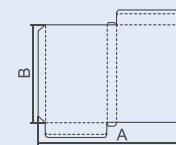


- 本机采用加强型传动机构，运行稳定，维护简单。
- 本机马达采用变频器，无极变速，稳定节能。
- 出纸采用多条加厚皮带配合振动马达，保证连续、准确、自动给纸。
- 采用高速磨边电机，左右配置，使上胶稳定、粘口牢固、不脱胶。
- 配备上、下糊筒各两组，左右采用牙杆调节，操作简便。
- 采用人机界面和PLC操作系统、远程诊断维护系统（另选配遥控控制系统），配备光电控制压紧部系统，进纸部加减速后压紧部自动加减速。可累加计数定量、分段计数，装有自动踢纸，功能更齐全。
- 输送部配备海绵压紧带，并配备气压功能，上部压紧宽皮带可单独来回移动，确保产品完尚无缺，横向收纸台，无极变速，收盒快捷。
- 本机能生产两折、四折勾底盒，预折部第一折为180°，第三折为135°，第二折及第四折为180°成型，特殊型式可另行设计。
- 本机采用高端型配置，施耐德电气/PLC/变频器，日本NITTA皮带，日本轴承以及马牌同步带，使机器运行更加快速、稳定。
- 除普通卡纸盒外，还可糊、折E型瓦楞。后机采用气动压力调节，使盒子上胶更牢固。
- 本机速度可达300米/分。

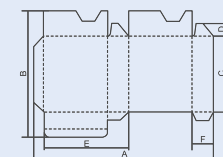
- The machine is running steady with strengthened driving system, and it is also easy for maintenance.
- The motor is controlled by transducers (inverter) which are available for automatic timing. It is power saved and it helps to work stably.
- Paper is feed by several thick belts under the help of vibration motor. Feeding is continuous, exact and automatic with this system.
- Grinders are provided in both sides of machine, to make gluing more stable and firm.
- Two sets of gluing units: top unit for bottom glue and lower unit for side glue. All standard glue units apply line glue. Space adjustment is through the tooth rods.
- PLC system and touch screen for easy operation. Out-put quantity/speed/counting etc., is able to set by this system.
- A remote diagnosis helps to maintenance (remote controller system included), and a photoelectric system for speed control in pressing unit (speed in pressing unit is corresponding automatically with the one in feeding unit). Counting through photo-electric sensor & electromagnet kicking.
- Pressing unit with pneumatic design. And the upper belt is able to work separately. Pressing also by a sponge belt in this section to keep out-put in a perfect condition.
- A transverse paper collection table after the pressing unit helps to collect boxes quickly.
- The machine is able to make 2-fold or 4-fold crash-lock bottom boxes. In the pre-folding part, the first fold at 180°, the third fold at 135°. The second fold and the fourth fold box at 180°.
- The spare parts are: Schneider Electric/PLC/Transducer(inverter), Japanese NITTA Belts, YHY/NSK Bearings, Continental Timing Belt, which make machine running more quick and steady. Except the normal cardboard boxes, it is able to fold and glue E flute.
- The pressing unit is in pneumatic design (air pressure system) to firm the glue.
- The machine speeds up to 300m/min.

Folder and
Gluer Machine

专业制造高速自动糊盒机



Straight Line Box
单边盒



Crash-lock Bottom Box
勾底盒



ZH-1000BFT-H High Speed

Automatic Crash Lock Bottom Type
Folder Gluer Machine

全自动高速勾底型糊盒机

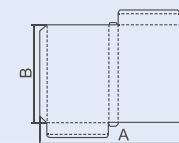
供选配
Optional

- 本机采用加强型传动机构，运行稳定，维护简单。
 - 本机马达采用变频器，无极变速，稳定节能。
 - 出纸采用多条加厚皮带配合振动马达，保证连续、准确、自动给纸。
 - 采用高速磨边电机，左右配置，使上胶稳定、粘口牢固、不脱胶。
 - 配备上、下糊筒各两组，左右采用牙杆调节，操作简便。
 - 采用人机界面和PLC操作系统、远程诊断维护系统（另选配遥控控制系统），配备光电控制压紧部系统，进纸部加减速后压紧部自动加减速。可累加计数定量、分段计数，装有自动踢纸，功能更齐全。
 - 输送部配备海绵压紧带，并配备气压功能，上部压紧宽皮带可单独来回移动，确保产品完尚无缺，横向收纸台，无极变速，收盒快捷。
 - 本机能生产两折、四折勾底盒，预折部第一折为180°，第三折为135°，第二折及第四折为180°成型，特殊型式可另行设计。
 - 本机采用高端型配置，施耐德电气/PLC/变频器，日本NITTA皮带，日本轴承以及马牌同步带，使机器运行更加快速、稳定。
- 除普通卡纸盒外，还可糊、折E型瓦楞。后机采用气动压力调节，使盒子上胶更牢固。
- 本机速度可达400米/分。

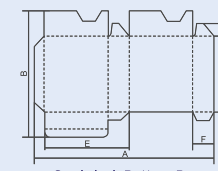
- The machine is running steady with strengthened driving system, and it is also easy for maintenance.
- The motor is controlled by transducers (inverter) which are available for automatic timing. It is power saved and it helps to work stably.
- Paper is feed by several thick belts under the help of vibration motor. Feeding is continuous, exact and automatic with this system.
- Grinders are provided in both sides of machine, to make gluing more stable and firm.
- Two sets of gluing units: top unit for bottom glue and lower unit for side glue. All standard glue units apply line glue. Space adjustment is through the tooth rods.
- PLC system and touch screen for easy operation. Out-put quantity/speed/counting etc., is able to set by this system.
- A remote diagnosis helps to maintenance (remote controller system included), and a photoelectric system for speed control in pressing unit (speed in pressing unit is corresponding automatically with the one in feeding unit). Counting through photo-electric sensor & electromagnet kicking.
- Pressing unit with pneumatic design. And the upper belt is able to work separately. Pressing also by a sponge belt in this section to keep out-put in a perfect condition.
- A transverse paper collection table after the pressing unit helps to collect boxes quickly.
- The machine is able to make 2-fold or 4-fold crash-lock bottom boxes. In the pre-folding part, the first fold at 180°, the third fold at 135°. The second fold and the fourth fold box at 180°.
- The spare parts are: Schneider Electric/PLC/Transducer(inverter), Japanese NITTA Belts, YHY/NSK Bearings, Continental Timing Belt, which make machine running more quick and steady. Except the normal cardboard boxes, it is able to fold and glue E flute.
- The pressing unit is in pneumatic design (air pressure system) to firm the glue.
- The machine speeds up to 400m/min.

Folder and Gluer Machine

专业制造高速自动糊盒机



Straight Line Box
单边盒



Crash-lock Bottom Box
勾底盒

ZH-1000FT-H

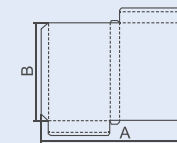
Automatic Two-Fold Type
Folder Gluer Machine

全自动二折型糊盒机



- 本机采用加强型传动机构，运行稳定，维护简单。
 - 本机马达采用变频器，无极变速，稳定节能。
 - 给纸部采用电机单独控制，出纸以多条加厚皮带配合振动马达，保证连续、准确、自动给纸。
 - 采用高速磨边电机，左右配置，使上胶稳定、粘口牢固、不脱胶。
 - 本机配备PLC触摸屏人机界面控制，使机器操作更加简单、方便。
 - 本机专为糊、折E/B型瓦楞纸盒设计，特别设计纠偏部校正走纸。
- 该机适用于二折型纸盒、B/E瓦楞盒；后机压紧部采用气动调节，使盒子上胶更牢固。
- 针对瓦楞盒，机器配有两侧折盒成型边带单独调速装置，使折盒皮带差时运转，达到纠正纸盒斜角，大小边不对称问题，使糊盒成品更加完美。
 - 机器压紧部配备气压功能。

- The machine is running steady with strengthened driving system, and it is also easy for maintenance.
 - The motor is controlled by transducers (inverter) which are available for automatic timing. It is power saved and helps to work stably.
 - Feeder is controlled by a separated motor. Paper is usually feed by several thick belts under the help of vibration motor.
- Feeding is continuous, exact and automatic with this system.
- Grinders are provided in both sides of machine, to make gluing more stable and firm.
 - PLC system and touch screen for easy operation. Out-put quantity/speed/counting etc., is able to set by this system.
 - This model is in special design with a correction unit for the corrugated box(E/B flute).
- The pressing unit is in pneumatic design (air pressure system).
- To make the un-symmetric folding corrected, an option of separate governor which can control speed in each side solely is offered to the corrugated board products in folding section.
 - Pressing unit with pneumatic design.



Straight Line Box
单边盒

ZH-880BFT-H

Automatic Crash Lock Bottom Type
Folder Gluer Machine

全自动高配勾底型糊盒机



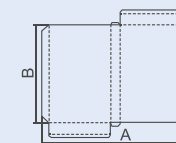
- 本机采用加强型传动机构，运行稳定，维护简单。
- 本机马达采用变频器，无极变速，稳定节能。
- 出纸采用多条加厚皮带配合振动马达，保证连续、准确、自动给纸。
- 采用高速磨边电机，左右配置，使上胶稳定、粘口牢固、不脱胶。
- 配备上、下糊筒各两组，左右采用牙杆调节，操作简便。
- 采用人机界面和PLC操作系统、远程诊断维护系统（另选配遥控控制系统），配备光电控制压部系统，进纸部加减速后压紧部自动加减速。可累加计数定量、分段计数，装有自动踢纸，功能更齐全。
- 输送部配备海绵压紧带，确保产品完尚无缺，横向收纸台，无极变速，收盒快捷。
- 本机能生产两折、四折勾底盒，预折部第一折为180°，第三折为135°，第二折及第四折为180°成型，特殊型式可另行设计。
- 另可根据客户要求，设计特殊难度纸盒糊盒成型，如成品规格30mm纸盒。

- The machine is running steady with strengthened driving system, and it is also easy for maintenance.
- The motor is controlled by transducer (inverter) which is available for automatic timing. It is power saved and helps to work stably.
- Paper is feed by several thick belts under the help of vibration motor. Feeding is continuous, exact and automatic with this system.
- Grinders are provided in both sides of machine, to make gluing more stable and firm.
- Two sets of gluing units: top unit for bottom glue and lower unit for side glue. All standard glue units apply line glue. Space adjustment is through the tooth rods.
- PLC system and touch screen for easy operation. Out-put quantity/speed/counting etc., is able to set by this system.
- A remote diagnosis helps to maintenance (remote controller system included), and a photoelectric system for speed control in pressing unit (speed in pressing unit is corresponding automatically with the one in feeding unit). Counting through photo-electric sensor & electromagnet kicking.
- Back Delivery unit use pressing sponge belts for pressing to ensure out-put in a perfect condition.
- A transverse paper collection table after the pressing unit helps to collect boxes quickly.
- The machine is able to make 2-fold or 4-fold crash-lock bottom boxes. In the pre-folding part, the first fold at 180°, the third fold at 135°.
- The second fold and the fourth fold box at 180°.
- Small box like out-put size at 30mm is able to be done after the special design according to customer requirement.

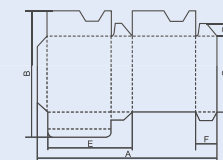


Optional 选配:显示屏

Stepless
Transmission
无极变速



Straight Line Box
单边盒



Crash-lock Bottom Box
勾底盒



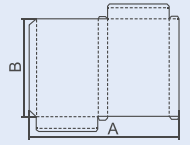
ZH-880BFT

Bottom Lock Type
Folder Gluer Machine
勾底糊盒机

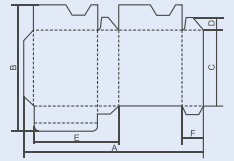


- 本机采用加强轻型单边传动机构，运行稳定，维护简单。
- 本机马达采用变频器，无极变速，稳定节能。
- 出纸采用多条加厚皮带配合振动马达，保证连续、准确、自动给纸。
- 采用高速磨边电机，左右配置，使上胶稳定、粘口牢固、不脱胶。
- 配备上、下糊筒各两组，左右采用牙杆调节，操作简便。
- 采用人机界面和PLC操作系统、远程诊断维护系统（另选配遥控控制系统），配备光电控制压部系统，进纸部加减速后压紧部自动加减速。可累加计数定量、分段计数，装有自动踢纸，功能更齐全。
- 输送部配备海绵压紧带，确保产品完好无缺，横向收纸台，无极变速，收盒快捷。
- 本机能生产两折、四折勾底盒，预折部第一折为180°，第三折为90°，第二折及第四折为180°成型，特殊型式可另行设计。
- 另可根据客户要求，设计特殊难度纸盒糊盒成型，如成品规格30mm纸盒。

- The machine is running steady with strengthened single-side driving system, and it is also easy for maintenance.
- The motor is controlled by transducer (inverter) which is available for automatic timing. It is power saved and helps to work stably.
- Paper is feed by several thick belts under the help of vibration motor. Feeding is continuous, exact and automatic with this system.
- Grinders are provided in both sides of machine, to make gluing more stable and firm.
- Two sets of gluing units: top unit for bottom glue and lower unit for side glue. All standard glue units apply line glue. Space adjustment is through the tooth rods.
- PLC system and touch screen for easy operation. Out-put quantity/speed/counting, etc., is able to set by this system.
A remote diagnosis helps to maintenance (remote controller system included), and a photoelectric system for speed control in pressing unit (speed in pressing unit is corresponding automatically with the one in feeding unit). Counting through photo-electric sensor & electromagnet kicking.
- Back Delivery unit use pressing sponge belts for pressing to ensure out-put in a perfect condition.
A transverse paper collection table after the pressing unit helps to collect boxes quickly.
- The machine is able to make 2-fold or 4-fold crash-lock bottom boxes. In the pre-folding part, the first fold at 180°, the third fold at 90°.
The second fold and the fourth fold box at 180°.
- Small box like out-put size at 30mm is able to be done after the special design according to customer requirement.



Straight Line Box
单边盒



Crash-lock Bottom Box
勾底盒

ZH-880PFT-H

Automatic Pre-folding Type
Folder Gluer Machine

全自动高速预折型糊盒机

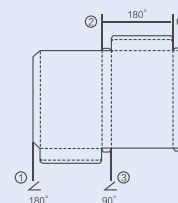


- 本机采用加强型传动机构，运行稳定，维护简单。
- 本机马达采用变频器，无极变速，稳定节能。
- 出纸采用多条加厚皮带配合振动马达，保证连续、准确、自动给纸。
- 采用高速磨边电机，左右配置，使上胶稳定、粘口牢固、不脱胶。
- 本机适合单侧边贴盒，四折使盒子更美观。预折部第一折为180°，第三折为135°，第二折及第四折为180°成型，特殊型式可另行设计。
- 本机配备PLC触摸屏人机界面控制，使机器操作更加简单、方便。
- 输送部配备气压功能，上部压紧宽皮带可单独来回移动，确保产品完尚无缺，横向收纸台，无极变速，收盒快捷。
- 另可设计成品30mm四折盒成型，及二折成品30mm纸盒。
- 本机采用高端型配置，施耐德电气/PLC/变频器，日本NITTA皮带，日本轴承以及马牌同步带，使机器运行更加快速、稳定。除普通卡纸盒外，还可糊、折E型瓦楞。
- 本机速度可达300米/分。

- The machine is running steady with strengthened driving system, and it is also easy for maintenance.
- The motor is controlled by transducer (inverter) which is available for automatic timing. It is power saved and helps to work stably.
- Paper is feed by several thick belts under the help of vibration motor. Feeding is continuous, exact and automatic with this system.
- Grinders are provided in both sides of machine, to make gluing more stable and firm.
- The machine is able to fold and glue straight line boxes. In the pre-folding part, the first fold at 180°, the third fold at 135°. The second fold and the fourth fold are molded at 180°.
- PLC system and touch screen for easy operation. Out-put quantity/speed/counting etc., is able to set by this system. Counting through photo-electric sensor & electromagnet kicking.
- Pressing unit with pneumatic design. And the upper belt is able to work separately. Pressing also by a sponge belt in this section to keep out-put in a perfect condition. A transverse paper collection table after the pressing unit helps to collect boxes quickly.
- Small box like out-put size at 30mm is also able to be done after the special design according to customer requirement.
- This model is upgraded to be a high speed model with a reinforced body. The main equipments are: Schneider Electric/PLC/Transducer, Japanese Nitta Belt, Japanese Bearing etc.
- The machine max speed up to 300m/min

Folder and Gluer Machine

专业制造高速自动糊盒机



Straight Line Box
单边盒



ZH-880PFT

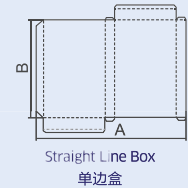
Pre-folding Type
Folder Gluer Machine

预折型糊盒机



- 本机采用加强轻便型单边传动机构，运行稳定，维护简单。
- 本机马达采用变频器，无极变速，稳定节能。
- 出纸采用多条加厚皮带配合振动马达，保证连续、准确、自动给纸。
- 采用高速磨边电机，左右配置，使上胶稳定、粘口牢固、不脱胶。
- 本机适合单侧边贴盒，四折使盒子更美观。预折部第一折为180°，第三折为90°，第二折及第四折为180°成型，特殊型式可另行设计。可按照客户要求增加预折180°-135°。
- 采用红外线光电控制，输送压紧部及自动计数功能，与进纸成型速度同时变速，出现空张自动减速停机，减少纸盒废品产生，节约成本。
- 另可设计成品30mm四折盒成型，及二折成品30mm纸盒。

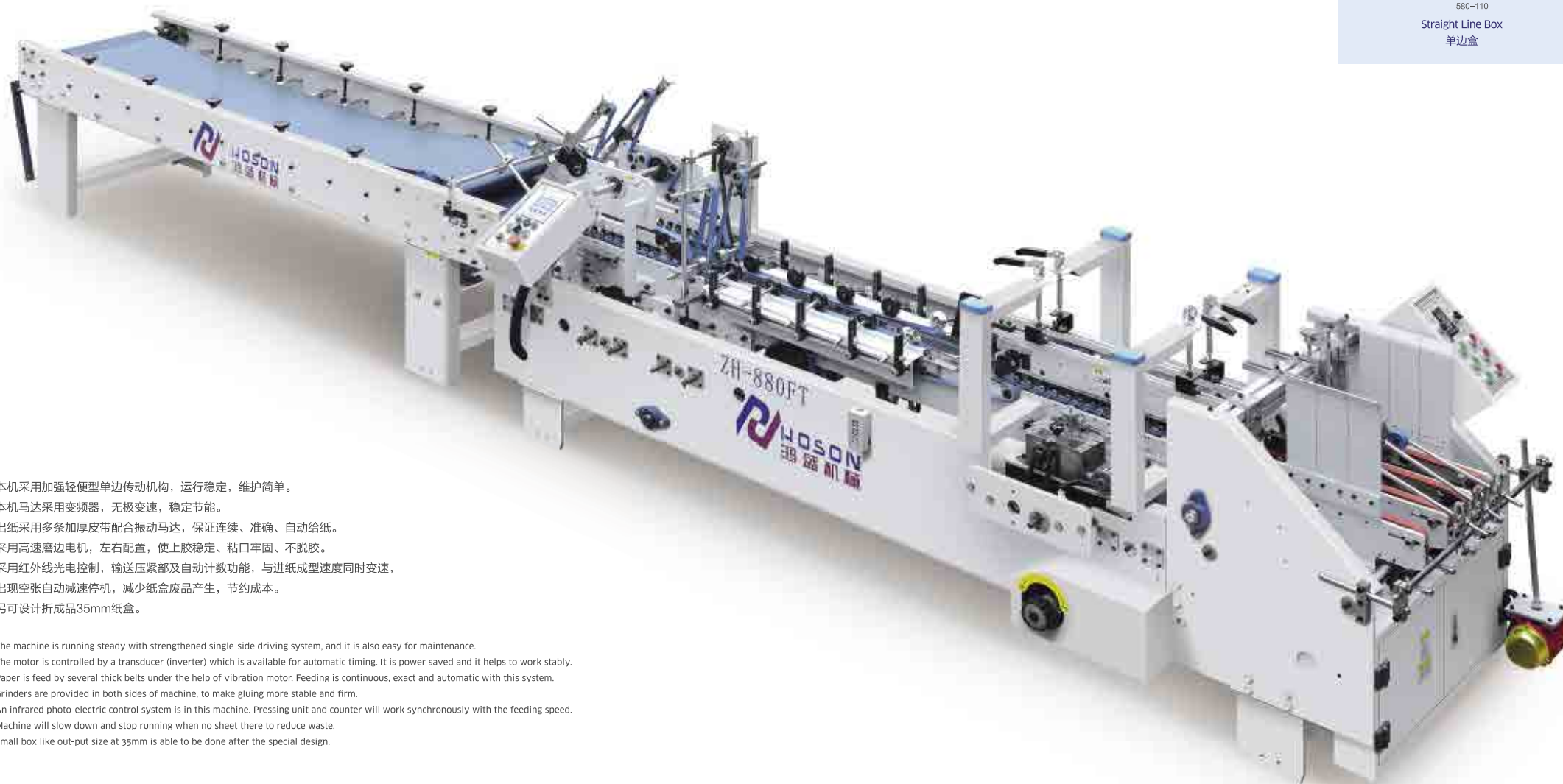
- The machine is running steady with strengthened single-side driving system, and it is also easy for maintenance.
- The motor is controlled by a transducer (inverter) which is available for automatic timing. It is power saved and helps to work stably.
- Paper is feed by several thick belts under the help of vibration motor. Feeding is continuous, exact and automatic with this system.
- Grinders are provided in both sides of machine, to make gluing more stable and firm.
- The machine is able to fold and glue straight line boxes. In the pre-folding part, the first fold at 180°, the third fold at 90°. The second fold and the fourth fold box at 180°. Options for 180°-135° in pre-folding part is available.
- An infrared photo-electric control system is in this machine. Pressing unit and counter will work synchronously with the feeding speed. Machine will slow down and stop running when no sheet there to reduce waste.
- Small box like out-put size at 30mm is able to be done after the special design according to customer requirement.



ZH-880FT

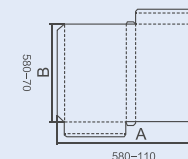
Two-fold Type
Folder Gluer Machine

二折型糊盒机



- 本机采用加强轻便型单边传动机构，运行稳定，维护简单。
- 本机马达采用变频器，无极变速，稳定节能。
- 出纸采用多条加厚皮带配合振动马达，保证连续、准确、自动给纸。
- 采用高速磨边电机，左右配置，使上胶稳定、粘口牢固、不脱胶。
- 采用红外线光电控制，输送压紧部及自动计数功能，与进纸成型速度同时变速，
- 出现空张自动减速停机，减少纸盒废品产生，节约成本。
- 另可设计折成品35mm纸盒。

- The machine is running steady with strengthened single-side driving system, and it is also easy for maintenance.
- The motor is controlled by a transducer (inverter) which is available for automatic timing. It is power saved and it helps to work stably.
- Paper is feed by several thick belts under the help of vibration motor. Feeding is continuous, exact and automatic with this system.
- Grinders are provided in both sides of machine, to make gluing more stable and firm.
- An infrared photo-electric control system is in this machine. Pressing unit and counter will work synchronously with the feeding speed. Machine will slow down and stop running when no sheet there to reduce waste.
- Small box like out-put size at 35mm is able to be done after the special design.



Straight Line Box
单边盒

糊盒技术参数 Technical Parameter

6角可折叠盒 6–Corner Collapsible Box							单位 (unit) :mm
型号Model		ZH-1000BFST	ZH-1200BFST	ZH-1300BFST	ZH-1400BFST	ZH-1600BFST	ZH-1800BFST
尺寸Size	Max	600	800	900	1000	1200	1400
	Min	320	320	320	320	400	400
A	Max	600	650	700	750	800	800
	Min	150	150	200	200	260	260
B	Max	100	100	100	100	100	100
	Min	30	30	30	30	30	30
C	Max	100	100	100	100	100	100
	Min	30	30	30	30	30	30

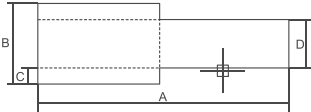
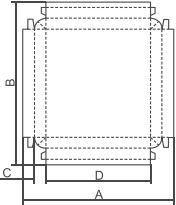
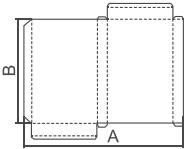
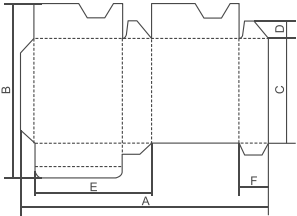
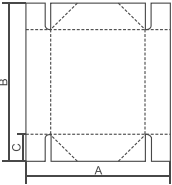
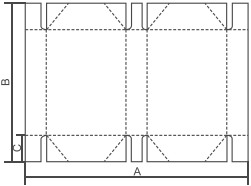
4角可折叠盒 4–Corner Collapsible Box							单位 (unit) :mm
型号Model		ZH-1000BFST	ZH-1200BFST	ZH-1300BFST	ZH-1400BFST	ZH-1600BFST	ZH-1800BFST
尺寸Size	Max	600	800	900	1000	1200	1400
	Min	260	260	280	280	300	300
A	Max	600	650	700	750	800	800
	Min	150	160	200	200	260	260
B	Max	100	100	100	100	100	100
	Min	30	30	30	30	30	30
C	Max	100	100	100	100	100	100
	Min	30	30	30	30	30	30

底贴盒 Crash–Lock Bottom Box								单位 (unit) :mm
型号Model		ZH-880BFT	ZH-1000BFT	ZH-1200BFT	ZH-1300BFT	ZH-1400BFT	ZH-1600BFT	ZH-1800BFT
尺寸Size	Max	520	700	850	1020	1080	1380	1520
	Min	210	210	300	300	300	350	500
A	Max	580	600	750	780	850	900	900
	Min	80	120	150	150	150	300	300
B	Max	580	600	750	780	850	900	900
	Min	70	100	200	200	200	200	500
C	Max	100	100	120	120	120	150	150
	Min	100	100	100	120	120	150	150
D	Max	100	100	100	120	120	150	150
	Min	100	100	100	120	120	150	150
E	Max	100	100	100	120	120	150	150
	Min	100	100	100	120	120	150	150
F	Max	100	100	100	120	120	150	150
	Min	100	100	100	120	120	150	150

单边贴盒 Straight Line Box								单位 (unit) :mm
型号Model		ZH-880FT	ZH-1000FT	ZH-1200FT	ZH-1300FT	ZH-1400FT	ZH-1600FT	ZH-1800FT
尺寸Size	Max	580	780	980	1050	1150	1380	1600
	Min	110	150	220	300	300	300	350
A	Max	580	600	750	780	850	900	900
	Min	70	100	200	200	200	200	500
B	Max	580	600	750	780	850	900	900
	Min	70	100	200	200	200	200	500
C	Max	100	100	120	120	120	150	150
	Min	100	100	100	120	120	150	150
D	Max	100	100	100	120	120	150	150
	Min	100	100	100	120	120	150	150

双边贴盒 Double–line Box								单位 (unit) :mm
型号Model		ZH-880BFT	ZH-1000BFT	ZH-1200BFT	ZH-1300BFT	ZH-1400BFT	ZH-1600BFT	ZH-1800BFT
尺寸Size	Max	500	650	780	980	1050	1380	1450
	Min	100	100	100	120	150	180	200
A	Max	500	650	780	980	1050	1380	1450
	Min	100	100	100	120	150	180	200
B	Max	100	100	100	120	120	150	150
	Min	100	100	100	120	120	150	150
C	Max	100	100	100	120	120	150	150
	Min	100	100	100	120	120	150	150
D	Max	100	100	100	120	120	150	150
	Min	100	100	100	120	120	150	150

特殊尺寸 的盒子，可根据客户要求对机器进行特殊设计，加装额外配置来完成。
Paper size not in the above range is also available to be done after a special design.



基本参数 Basic Parameter

型 号 Model No.	最高速度 Max. Speed	功 率 Motor Power	尺寸 (长x宽x高) Dimension(LxWxH)	机器重量 Weight
ZH-1600BFST	280m/min	17.2kw	16.5 x 2.2 x 1.7m	9200kg
ZH-1400BFST	280m/min	13.2kw	13.6 x 2.2 x 1.6m	8600kg
ZH-1200BFST	280m/min	13.2kw	13.0 x 1.9 x 1.6m	8300kg
ZH-880BFST	280m/min	13.2kw	12.8 x 1.4 x 1.3m	6600kg
ZH-1800BFT-H	280m/min	22.0kw	16.8 x 2.3 x 1.7m	8900kg
ZH-1600BFT-H	200m/min	17.2kw	14.0 x 2.1 x 1.65m	8500kg
ZH-1400BFT-H	280m/min	14kw	16.0 x 1.9 x 1.5m	7500kg
ZH-1800FT-H	280m/min	13.7kw	13.5 x 2.5 x 1.65m	6000kg
ZH-1400FT-H	180m/min	11.0kw	12.7 x 1.8 x 1.6m	5300kg
ZH-1400FT	160m/min	6.0kw	10.0 x 1.6 x 1.6m	3800kg
ZH-1000FT-H	300m/min	7.0kw	9.2 x 1.4 x 1.5m	3400kg
ZH-880FT	160m/min	2.4kw	6.1 x 1.1 x 1.4m	1150kg
ZH-1200BFT	200m/min	10.0kw	12.8 x 1.6 x 1.4m	6200kg
ZH-1000BFT-H	300m/min	11.0kw	11.7 x 1.5 x 1.4m	4300kg
ZH-1000BFT-H	400m/min	13.0kw	14.0 x 1.6 x 1.4m	5200kg
ZH-880BFT-H	300m/min	8.5kw	11.5 x 1.4 x 1.3m	3700kg
ZH-880BFT	200m/min	6.0kw	9.0 x 1.2 x 1.5m	2500kg
ZH-880PFT-H	300m/min	8.0kw	10.2 x 1.2 x 1.5m	3100kg
ZH-880PFT	180m/min	3.0kw	7.5 x 1.1 x 1.4m	1600kg

仅供参考! 机器的结构和技术参数以实际为准
The above-mentioned parameters are subject to actual data.

可选配 Options



等离子表面处理器（单枪）
Plasma of Surface Processor
Device(One Nozzle)



等离子表面处理器（三枪）
Plasma of Surface Processor
Device(Three Nozzles)



hhs 冷胶喷胶系统
hhs Cold Glue Spray
Adhesive System